

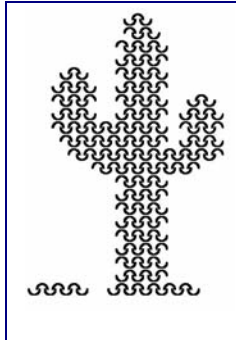
# CACTUS CABLERS

Summer, 2001

Vol. 13, No. 3

## Letter from the President

I've pondered writing this letter for a long time and since I'm a closet philosopher and such a deep thinker, I'm going to tell you about a squirrel that came to the Sit & Stitch at Linda's two weeks ago. We didn't let him in so he proceeded to scratch soil out of several of her potted plants on the back patio.



When we had lunch in the dining room, which is in the front of the house, lo, & behold who was playing around the window but "Buster" the squirrel? He had done his mischief in some plants out front also.

I was reminded of a neighborhood squirrel that we used to have. I say used to have because Linda's squirrel reminded me that I haven't seen our squirrel at all this summer. He used to like to sit on the rooftops and play "peek-a-boo" with all of the neighbors. I discovered last year that he lived in the back yard two doors down. They have a German Shepherd and the dog and squirrel were great friends. Some just don't care who you are or what you look like or even what your beliefs are, they'll let you play in their backyard any day!

*Terri*

P.S. Come & play with us at a Sit & Stitch.

## Meet Jill - 2001 Doll Raffle

Jill, our gorgeous raffle doll for this year is here

and she's waiting for her new wardrobe and

accessories!! She has the same all porcelain body that our last doll had so you can just use the measurement chart and patterns you used last year. She has gorgeous long red hair and cobalt blue eyes.

Sadly, this year we won't have Betty, who was always our top ticket seller, to help us out with ticket sales so the rest of us will have to work a little harder! Remember that you can earn enough points to completely pay for your SAGA dues buy sewing for her and/or selling raffle tickets. This is our way of making Cactus Cablers membership available to everyone who wants to join. (You can't use the cost of SAGA dues as an excuse not to join because essentially you don't have to spend any cash!)

### In This Issue

- **Programs & News**
- **2001 Doll Raffle**
- **Shalom House Reminder**
- **Christmas in September**
- **Ornament fabric Chart**
- **Ornament Instructions**

## PROGRAMS & NEWS

### September 19 – Edge Finish – Jennifer Buette

Jennifer will be showing us a beautiful hand stitch that you can use for finishing the edge of many of your projects. This is a gorgeous little scallop using a buttonhole stitch.

### October 17 – Doll Bonnet – Mary Glenn

Mary has a very sweet bonnet that she will be showing us and explaining how to make and fit it to our own dolls. This will be just in time for you to make one for our raffle doll this year!

### November 21 – Paper Piecing – Marci Abitz

Marci has a slick technique for easy paper piecing that you can use for crazy patch designs such as the scissors case that we made with Laura Jenkins Thompson this past Spring. You can also use this technique to create wonderful little details in your doll clothes and many other projects. I'm sure you won't want to miss this one.

### December 1 – Christmas Party!!

No regular meeting this month. We will be having our annual Christmas party and doll raffle. The location has yet to be determined and will be announced at a later date

**Idea #1:** How about a restaurant this year? No one will have to

stress out over getting her house ready or even preparing a dish! Let's think about giving all of us a break this year!

**Idea #2:** How about each one of us making an ornament to bring to the party for Show & Share – no contest, no prizes just a theme for Show & Share? If you're feeling especially creative, make it an original design!

### January 16, 2002 – Wee Care Workshop

Be sure to attend in January so that we can get as many gowns as possible made and packaged and ready to hand out for smocking for the year! Supplies needed are the usual: sewing machines, sergers, pleaters (lots of pleaters) blue markers, scissors, rulers, irons and ironing boards.

### February 20 - ????

We don't have anything lined up for this month yet. How about volunteering? Jacki can use your help to make our programs outstanding this year! Find a technique that interests you and build a program around it. It's fun and you'll be the one who

learns the most!

## Refreshments

### September – Loretta & Linda

**October – Bring a salad or a dessert to share and bring your own beverage.**

### November - ??????

See Gail Bastian and volunteer with a friend to bring lunch.

## Raffle

The monthly raffle is now a **50/50 raffle**. Buy a ticket for \$1 or 6/\$5 and if you are the winner you take home half of the money collected! What a deal!

## Sit & Stitch

### October - ????

### November - ????

Volunteer to host a Sit & Stitch at your home. We have a great time and it's a nice opportunity to get together with friends another time during the month! The hostess provides beverages and a dessert. You just need to bring a salad to share and a little project to work on.

## 2001 Doll Raffle

Meet Jill! She is ready and waiting for her new wardrobe and accessories. With her beautiful red hair and gorgeous blue eyes she would look lovely in a wardrobe with a color palette of lush greens, rich oranges, olives & terra-cotta, these are great fall colors. A gorgeous combination would be cinnamon, salmon or brick red with an accent color of teal or aqua. (Avoid fuchsia, pink and plum.)



The patterns for the American Girl dolls will fit, however Jill is a little thinner through her body. Have fun sewing for her!

### Garment Points

- ½ pt.** – Each \$1.00 ticket sold
- 3 pt.** – Small mcs. Items, unsmocked (panties, slip, blouse, skirt, vest, slippers, collars/bibs, etc.)
- 6 pt.** – Larger items of clothing & accessories (unsmocked dress, pinafore, gown, purchased shoes)
- 9 pt.** – Smocked clothing (dresses, pinafores, pinafore bibs, gowns, etc.)
- 12 pt.** – Heirloom sewn clothes (with fine laces and batiste), smocked coat
- 15 pt.** – Smocking with heirloom sewing in a garment (something really special)

Collect a total of 30 points to completely pay your SAGA dues.

### Shalom House

Once again this year we have chosen Shalom House as the charity for our holiday community service project. Instead of exchanging gifts with one another at our Christmas party we make clothing and other donations to a selected organization. Shalom House is a shelter for abused women and children where they are given an opportunity to reorder their lives and get back on their feet.

Please make anything you would like in any size for either a male or female child or for an adult female. The staff loves the smocked clothing we have donated in past years and they really enjoy passing these things out to their residents. They can also use personal toiletry items that cannot be purchased with food stamps and gift certificates for grocery stores. Please leave all of your donations unwrapped and remember all items are to be new and unused as these are intended as Christmas gifts. Items will be collected at our Christmas Party. Terri Kilgore is our contact person if you have any questions.

## Christmas in September – Ornaments from two of our members

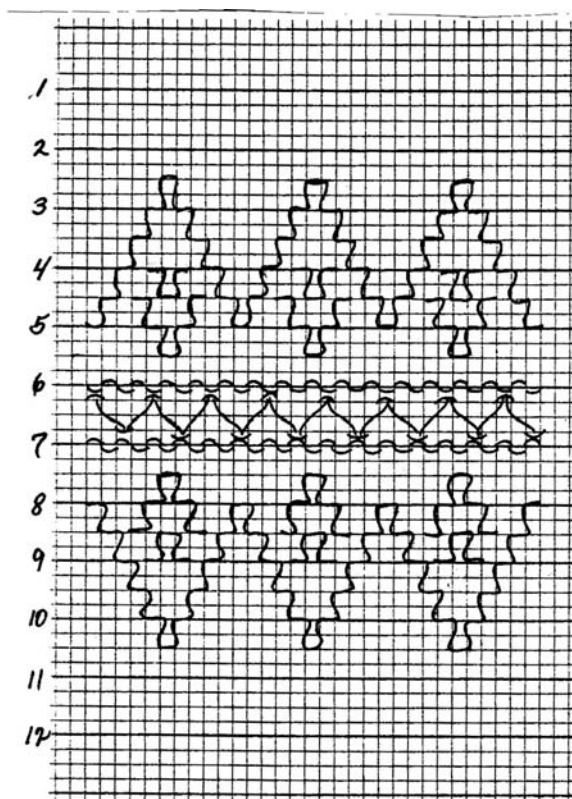


**CHRISTMAS MORN**



**POINSETTIA**

Both by Jacki Spatafore



More Christmas in September:

### **Instructions for Poinsettia & Christmas Morn:**

With this design by Jacki you get two completely different looks just by using two different forms! This design is worked in the **Van Dyke Stitch**.

White fabric, (for a 3" ornament – 4 ½" x 35", 10 rows of pleating, 8 rows of smocking)

Red & green floss of your choice

3" Styrofoam ball or disk shaped Styrofoam form

(If you can not find a disk shaped form, Jacki discovered that you can make your own by squashing a round Styrofoam ball under your heel! It really will work, but the balls that work best are the ones that are very dense and smooth not the standard porous looking type. These can often be found by purchasing the satin covered balls available in discount stores and removing all the satin threads)

¼" red ribbon for hanger



**Royal Twist**

By Terri Kilgore

## Christmas in September continued:

### Instructions & Materials for Royal Twist:

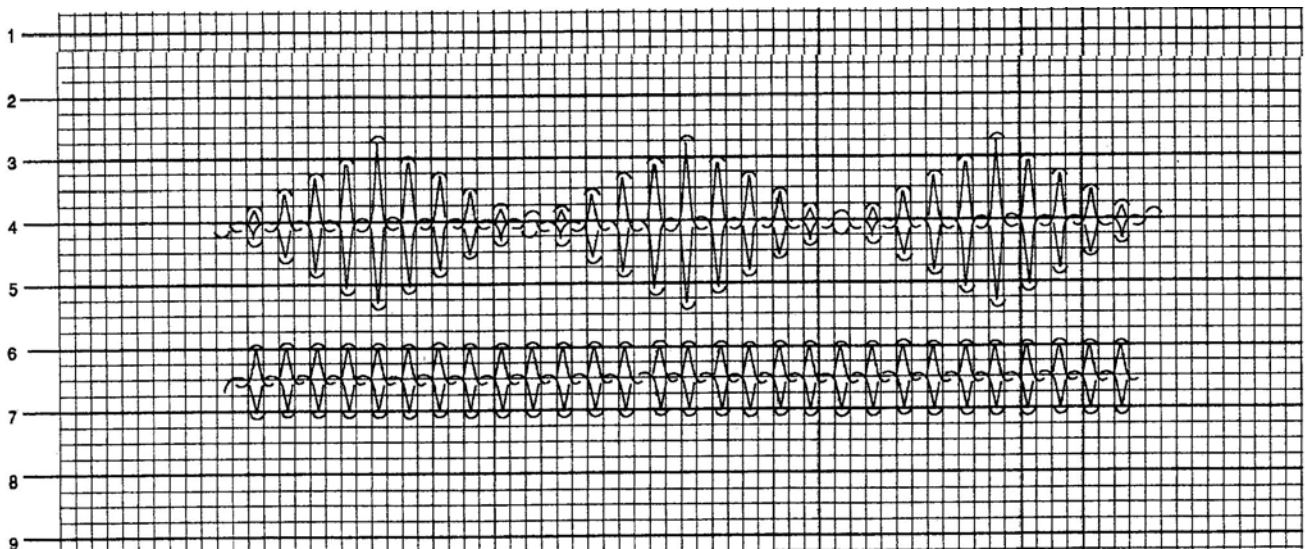
Fabric & floss of your choice

Disk shaped Styrofoam

¼" ribbon for hanger

Follow general instructions for fabric size for your form and construction. Pleat 12 rows and smock according to graph. Repeat smocking from rows 2 ¾ through 5 ½ in mirror image on rows 7 ½ through 10 ¼.

This design is worked in the **Surface Honeycomb Stitch** and Terri says to make it easier, use two needles at the same time, looping lower cable around each other. This leaves an open channel through center of the design.



Christmas in September continued:

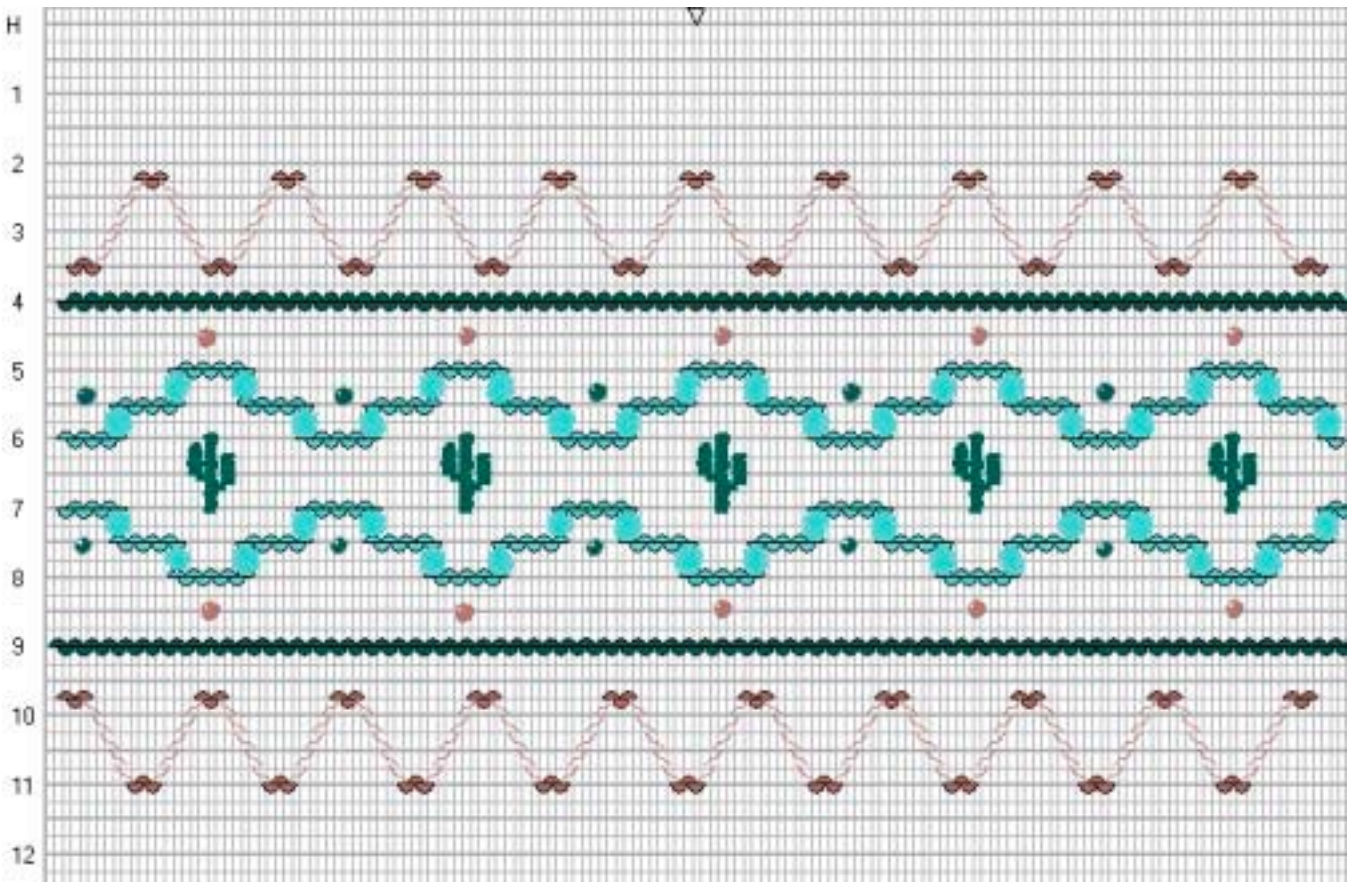


Jacki has created a gorgeous Tucson variation of the plate Sante Fe by Fancy Stitches for this ornament. This is a great ornament to make as a gift for a friend who would love a touch of the Southwest on her tree! Use copper conchos, feathers and leather lacing as your trim. The conchos are a great way to cover the ends of this ornament quickly and easily!

Create the Saguaro's and the vertical bars in the frames by satin stitching over two pleats at a time according to the graph. Dusty Rose and two shades of teal green makes a beautiful color combination.

**Southwestern Ornament**

By Jacki Spatafore

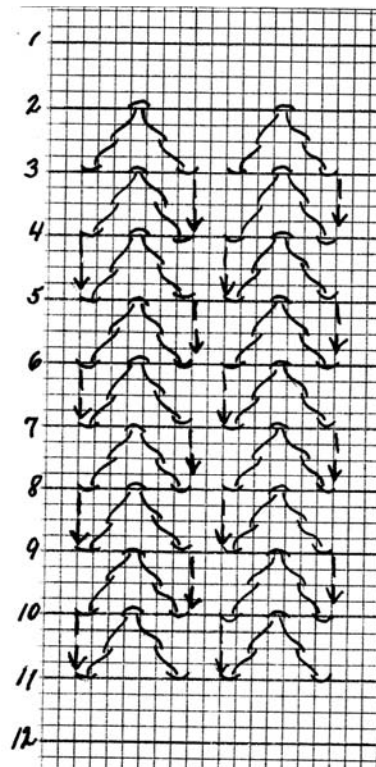


**Christmas in September continued:**



**Shimmering Silver**

By Jacki Spatafore



## Christmas in September continued:

### Instructions & Materials for Shimmering Silver:

3" Styrofoam ball

Metallic thread

Metallic fabric

Ribbon roses

Decorative trim approximately 3/8" wide

1/8" ribbon

Pleat 12 rows and smock according to graph.

The beauty of this ornament by Jacki is the material and the thread. Jacki used metallic fabric with 2 strands of metallic thread, this creates texture because one can not see the threads.

The pattern is worked to top bottom with the thread running behind as you go to the next trellis. Turn your fabric as needed to be able to work your trellis from right to left.

Repeat each vertical trellis until you have 10 trellis sections. The skipped pleat between each trellis will accommodate the decorative trim.

**Christmas Ornament Fabric Chart**

<u>Diameter</u>	<u>Dimension of Fabric</u>	<u>Rows of Pleating</u>	<u>Rows of Smocking</u>
2" Ball	3 3/4" x 22 1/2"	7	5
2 1/2" Ball	4 1/4" x 32 – 45"	8	6
2 1/2" Ball w/ruffles	5 3/4" – 6" x 32" – 45"	8	6
3" Ball	4 1/2" x 35" – 45"	10	8
3" Ball w/ruffles	6 1/2" x 35" – 45"	10	8
2 1/2" Egg	4 1/2" x 22 1/2"	10	8
2 1/2" Egg w/ruffles	5 1/4" x 22 1/2"	7	5

## Christmas Ball Instructions

Christmas balls are easy and fun to make but they do require a little bit of advance planning. You need to measure the form you intend to use as the base of the ornament. Round shapes are most often used but don't be limited to those, try any shape for a truly original design!

Measure the height and circumference of your form to determine the size of the piece of fabric you will need. Measure the widest and tallest areas if you are using an irregular shape. Measure the circumference of a ball for the width and divide this measurement in half for the length. To the length measurement add approximately 1' – 1 ½" to allow for pleating and smocking ease (the extra will be cut away later) this will be the length you cut your fabric. Multiply the circumference (width) measurement by 3.5 if you are using a heavy fabric like velvet or corduroy and by 4 if you are using a lightweight fabric like batiste. This will give you the width to cut your piece of fabric. Allow a little extra width so that you will have a few extra pleats if needed to make your design come out evenly matched at the seam. You can always cut away the extra later.

Pleat and smock according to your selected design. Do not remove the first two rows or last two rows of pleating threads, these will help you draw the fabric down around your form for a nice fit. Wrap your fabric around the form and match your design and check fit. Either slip stitch the ends together or finish by smocking in the round. Position and stabilize your smocked piece around the form by temporarily using straight pins to hold it in place. Cut away any excess fabric length if needed and using the pleating threads draw the fabric down around the form. Tie the threads together into a firm knot and clip the ends. Finish the ends of your ornament with the spider web stitch or with a button, jewelry finding or looped ribbons etc. Attach a hanger and enjoy on your tree!

For complete and excellent instructions on making ornaments see the Sept/Oct 1993 issue of *Creative Needle*, pp. 55 – 58. For instructions on making spider webs see the Fall 1982 issue of *Smocking Arts Guild of America Newsletter*, pp. 34 & 35

### Cactus Cablers' Smocking Guild c/o Linda Richards

e-mail: [cactuscablers@yahoo.com](mailto:cactuscablers@yahoo.com)

website: [www.geocities.com/ladida\\_50/CactusCablers.html](http://www.geocities.com/ladida_50/CactusCablers.html)



**REPRINT INFORMATON:** Any non-profit needlework organization has permission to reprint any original material contained in this newsletter. Proper credit must be given to the author and chapter. If you are reprinting an article from another chapter, please give credit to all chapters involved in passing along the information. Please forward a copy of the publication containing the reprinted material to **Cactus Cablers**. Thank you.